



## Instructions

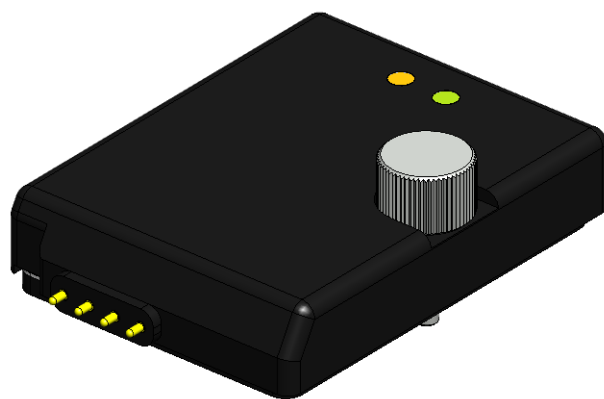
# Leak Sensor

Part Number 21044004

The optional leak sensor (PN 21044004) is designed to detect any fluid leakage and stop the pump if this occurs. A knurled screw is provided with the sensor module.

## Installation

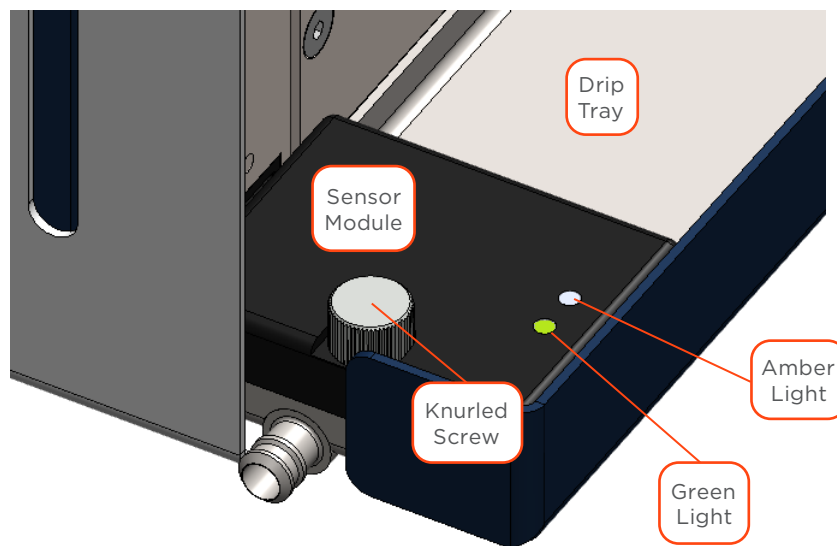
1. Power the pump on.
2. Place the sensor module to the left side of the drip tray in order that the four metallic pins are in contact with the four contacts on the front panel of the pump.
3. Attach the sensor module using the knurled screw.
4. Ensure that the green light of the sensor module is lit, and the amber light off.



**Figure 1**  
Leak Sensor

### NOTE

When fluid leakage is detected below the sensor module, its amber light illuminates and the status indicator of the pump flashes amber (5 times/sec). When the spill is wiped up in the drip tray below the sensor module, its amber light turns off while the status indicator continues flashing.



**Figure 2**  
Leak Sensor Installed on  
VERITY® 3240 High Pressure Binary Gradient Pump